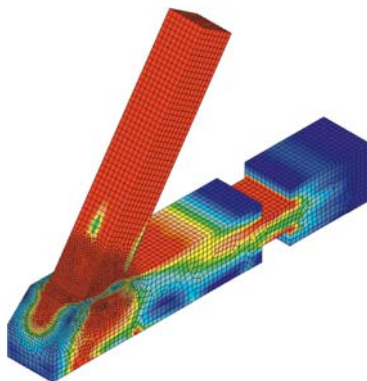


Vliv výztuhy stěny sloupu v rámovém rohu na průběh srovnávacích napětí, projekt Merlion
Influence of the shear stiffener to the eaves moment connection, project Merlion

- | | | |
|-----------|---|---------------|
| 21.-23.5. | Experimental Research with Timber
Seminar of COST Action Fp1004
Enhance mechanical properties of timber, engineered wood products and timber structures, hall C215 | 09:00-17:00 |
| 26.5. | INFASO⁺
New Market Chances for Steel Structures by Innovative Fastening Solutions between Steel and Concrete
Final meeting, room B578 | 10:00 - 16:30 |
| 26.5. | Concert of rock band PARALET
Meeting of Department Alumni, Entrance hall | 17:00-19:00 |
| 27.5. | To education in Steel and Timber
Meeting of Steel and Timber Departments from Czech and Slovak Republic, hall B169 | 14:00-21:00 |
| 28.-30.5. | Steel, Space & Composite structures
12 th International Conference, lecture hall C217 | 09:00-19:00 |
| 30.5. | Seminar of project MERLION
Advanced software for structural steel joints, managing by IDEA RS a.s., hall B169 | 10:00-12:00 |
| 31.5. | Excursion to Troja Bridge
design by EXCON a.s.
on the bridge: 50°6'42.664"N, 14°26'3.999"E | 10:00-12:00 |



Von Misesovo napětí – tesařský spoj – šikmý střední čep
Von Mises stresses in carpentry joint with inclined central pin

Department of Steel and Timber Structures
 Faculty of Civil Engineering
 Czech Technical University
 Thákurova 7
 166 29 Praha
 Czech Republic