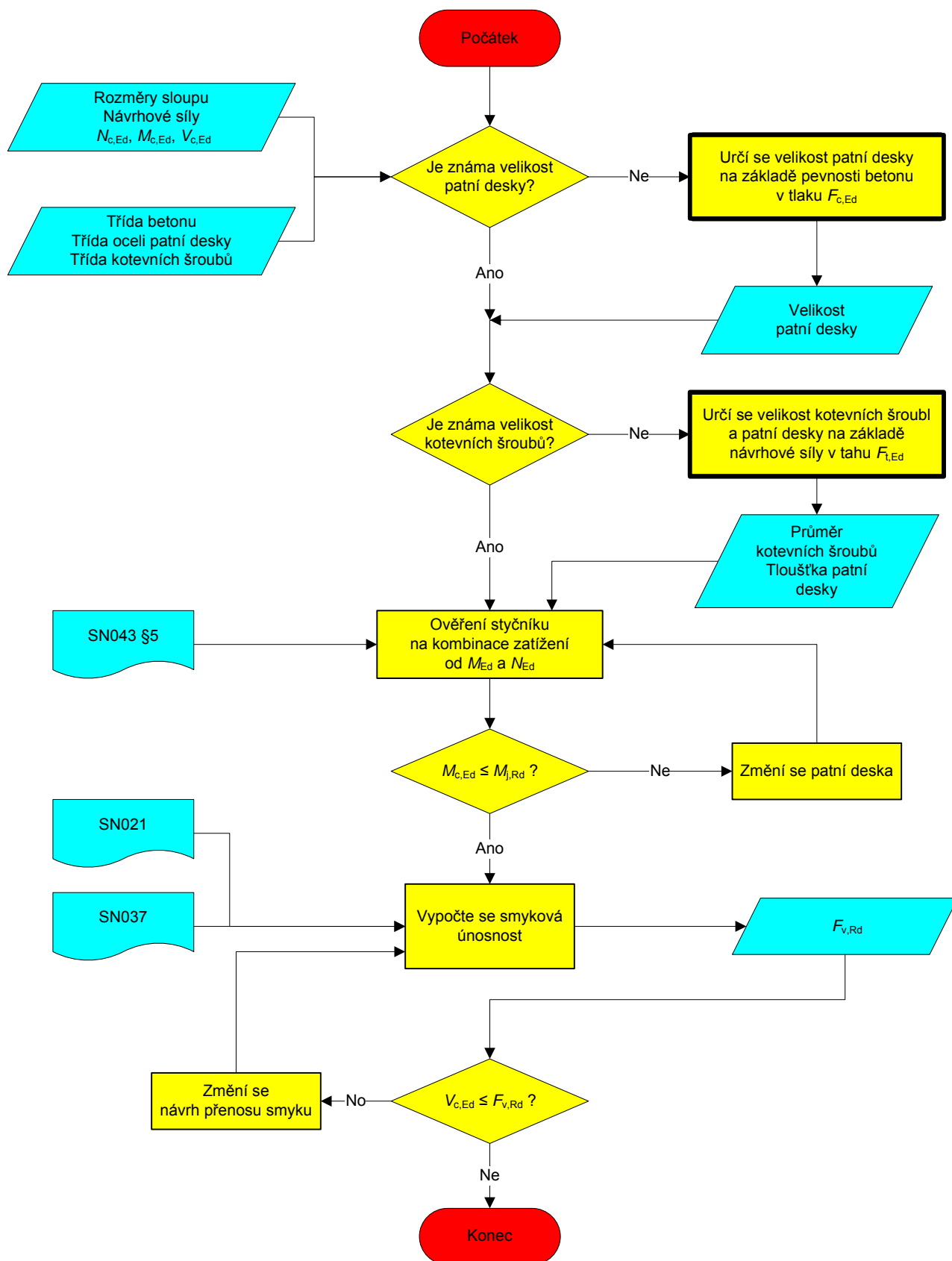
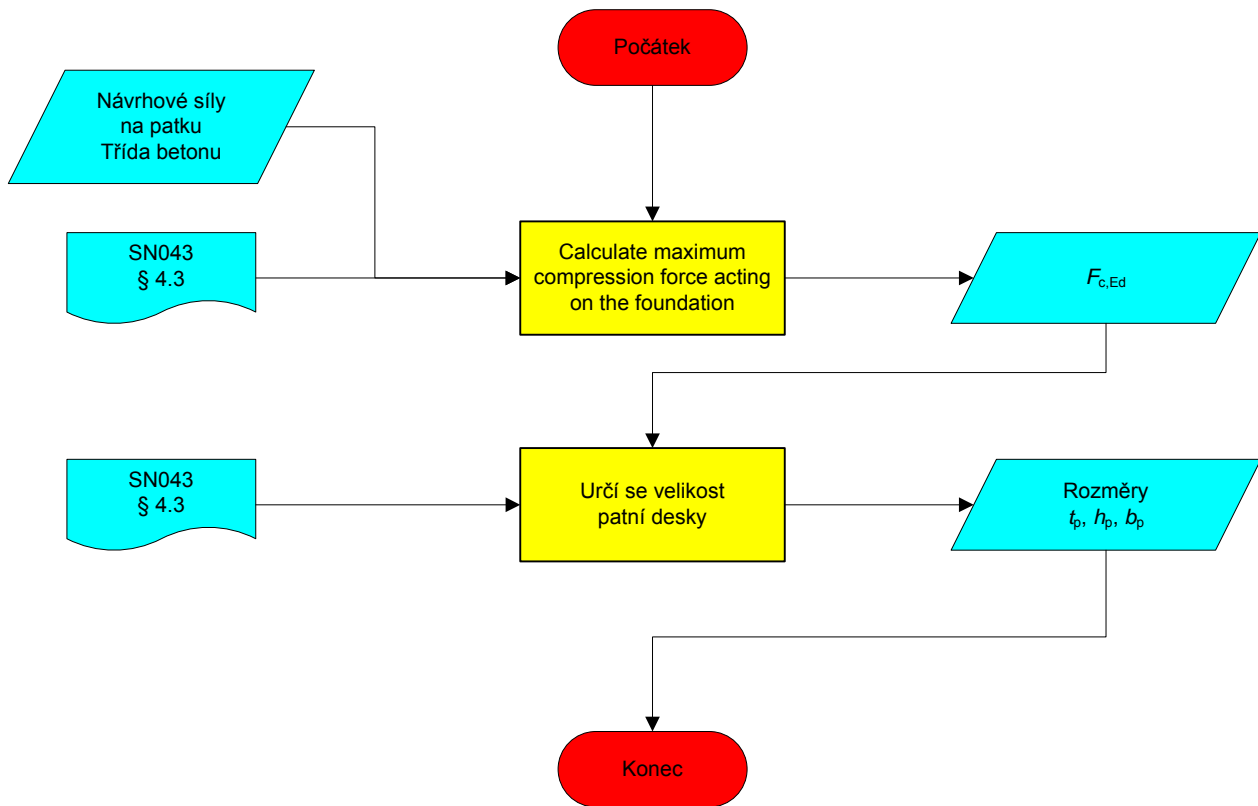


Vývojový diagram: Ohybově tuhá patka

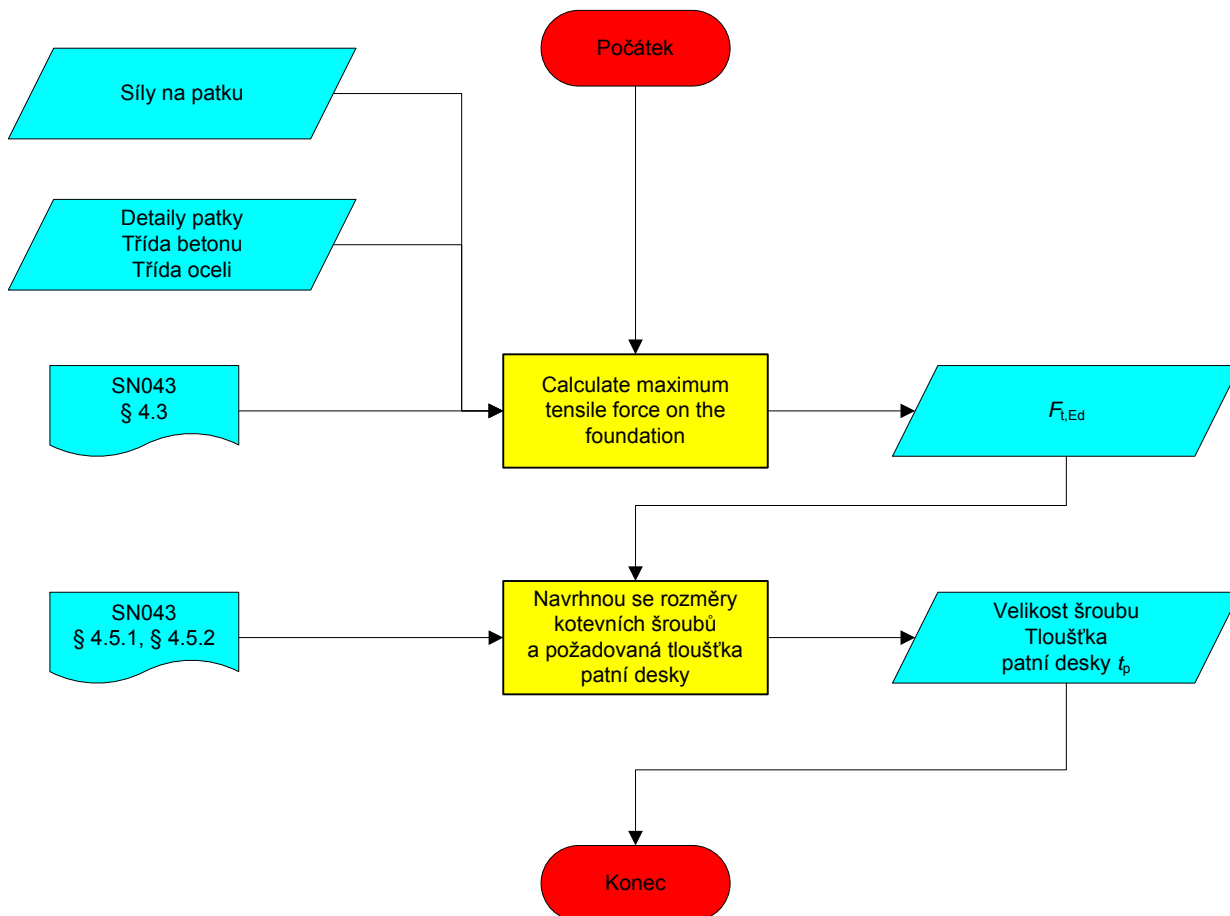
Tento vývojový diagram popisuje postup návrhu vetknuté patky.



Určení velikosti patní desky podle normálové síly



Stanovení velikosti kotevních šroubů



Quality Record

RESOURCE Title	Vývojový diagram: Ohybově tuhá patka		
Reference(s)			
ORIGINAL DOCUMENT			
	Name	Company	Date
Created by	Ivor Ryan	CTICM	07/02/2006
Technical content checked by	Alain Bureau	CTICM	07/02/2006
Editorial content checked by			
Technical content endorsed by the following STEEL Partners:			
1. UK	G W Owens	SCI	23/5/06
2. France	A Bureau	CTICM	23/5/06
3. Sweden	B Uppfeldt	SBI	23/5/06
4. Germany	C Müller	RWTH	23/5/06
5. Spain	J Chica	Labein	23/5/06
Resource approved by Technical Coordinator	G W Owens	SCI	21/8/06
TRANSLATED DOCUMENT			
The translation made and checked by:	F. Wald	ČVUT in Prague	02/05/2007
Translated resource approved by:	T.Vraný	ČVUT in Prague	15/07/2007
National technical contact:	F. Wald	ČVUT in Prague	02/05/2007